

# VANAGON LED REPLACEMENT CROSS-REFERENCE

The following uses LED part numbers and prices from [www.superbrightLEDs.com](http://www.superbrightLEDs.com) . "HP" means High-Power LED.

Location	Original Bulb Type	LED Equivalent	LED Colors Available	Recommended LED Color	Price	Notes
Headlight switch Hazard switch Defrost switch Fog light switch HVAC panel Cigarette lighter	74W mini-wedge	74-xHP	White Red Green Blue Amber	(your choice)	2-lumen: \$1.19 6-lumen: \$2.49	Headlight switch does not normally have a bulb; new switch from VanCafe with opaque icon required along with wire splicing and contact installation. Please see <a href="#">syncrodoka's post</a> on theSamba for instructions.  Defrost switch bulb is built into the switch; not easily replaced, but can be done; may require a regular LED with you wiring/soldering in a resistor.  Hazard switch is replaceable but uses non-standard bulb holder; modification required & not easy to do.  HVAC control will require bulb holder 321-919-039 from GoWesty; paint the holder black.
Instrument cluster (4 total)	B8.3D	B8.3D or B8.3D-xHP	White Red Green Blue Amber Ultraviolet	(your choice; see examples on page 3)	Regular: \$1.59 HP: \$2.59	Plug-n-play replacement.  Polarity-based bulbs; if they don't light up, rotate them 180 degrees.  HP blue gives a richer, crisper blue than regular blue.
Syncro control panel (3 total)	B8.3D	B8.3D or B8.3D-xHP	White Red Green Blue Amber Ultraviolet	Backlight: White Locker: Green Decoupler: Green	Regular: \$1.59 HP: \$2.59	Plug-n-play replacement.  Polarity-based bulbs; if they don't light up, rotate them 180 degrees.
Courtesy light	6411 Festoon 10W	4210WHP3 or 4210WHP6	Warm white Cool white Red Blue Amber	White (your choice)	HP3: \$7.95 HP6: \$14.95	Cool white is similar to fluorescent (crisp white), warm white is similar to incandescent (yellowish glow).  Many feel that the HP6 bulb is too bright.
Map/glove box light	6423? Festoon 3W	3022xHP4	Warm white Cool white Red Blue Amber	White (your choice)	\$6.95	Cool white is similar to fluorescent (crisp white), warm white is similar to incandescent (yellowish glow).

Kitchen light (Westfalia full-campers)	6411 Festoon 10W	4210WHP3 or 4210WHP6	Warm white Cool white Red Blue Amber	White (your choice)	HP3: \$7.95 HP6: \$14.95	Warm white gives a homey glow; cool white gives a brighter, fluorescent-type glow. Three 3-LED festoon provide about the same light output as the original 3 incandescent bulbs. Mix and match if need be (ex: one 6-LED with two 3-LED bulbs).
Front parking/turn signal lights	7528 Bayonet 5W/21W	BAY15D-1157 SMD LED	Warm white Cool white Red Amber	Amber	\$6.99+	Not recommended for front lights unless a resistor is wired across (in parallel with) the bulbs.
License plate lights Rear side- marker lights	3893 Mini bayonet 4W	BA9S-xHP6 (12 volt)	Warm white Cool white Red Blue Green Amber	License: White Side: Red	\$4.95	
Tail lights	5008 Bayonet 10W	BA15S-1156 SMD LED	Red Amber Cool white White	Red	\$17.95	Use 360-degree tower bulb with 18 LEDs.
Brake lights Backup lights Rear turn signal lights	7506 Bayonet 21W	BA15S-1156 SMD LED	Red Amber Cool white White	Backup: White Brake: Red Signal: Amber	\$24.95	Use 360-degree tower bulb with 45 LEDs.  Less expensive directional bulb (30-LED BA15) might be a better choice for the brake light due to the housing's lack of reflector.  Not recommended for rear turn signal lights unless a resistor is wired across (in parallel with) the bulbs.

Examples from theSamba members:



Member: *kamzcab86*  
Speedo, tach, clock, warning lights: Original incandescent



Member: *kamzcab86*  
Speedo, tach, clock: White LED  
Warning lights: HP Blue LED



Member: *vanshock*  
Speedo & Tach: Blue LED  
Warning lights, clock, switches: Red LED



Member: *ahollon*  
Speedo, tach, warning lights, clock: Blue LED  
Switch: Red LED



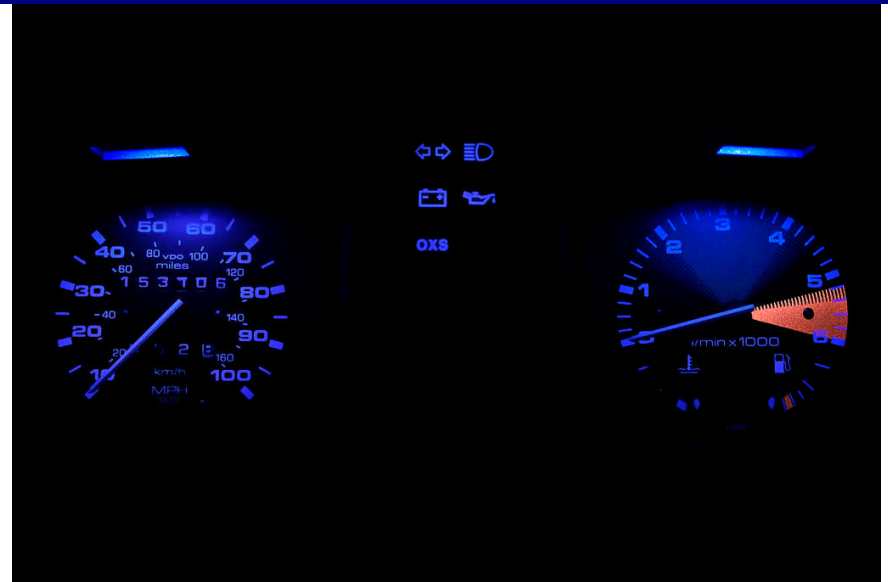
Member: *ahollon*  
 Speedo, tach, warning lights, clock: Blue LED  
 White gauge faces installed.



Member: *keithwwalker*  
 Speedo & tach: Blue LED  
 Warning lights: Red LED  
 Clock: White LED



Member: *syncrodoka*  
 Speedo, tach, warning lights, clock, switch: White LED



Member: *Santana*  
 Speedo, tach, warning lights: HP Blue LED



Member: *McVanagon*

6-LED warm white courtesy light (right), incandescent cabin light (left)



Member: *ANGOVAY*

Westy kitchen light: Center is original incandescent; right & left are new LEDs